



# Nice Pass

the easy solution  
for **access  
control**

Nice

Nice

NicePass

DIN access control module with BusT4 output, 4 Wiegand ports, 4 dry contact inputs used as input contacts and 4 used as output contacts, ethernet port.

Nice Pass is the access control conceived for buildings with multiple entrances, such as blocks of flats, commercial areas and public spaces.

With Nice Pass, at any moment the administrator user can view who is in the building, the date and time of each entry or exit, confirmed and denied accesses and the status of each associated automation.

If necessary, the system administrator can also block one or more users, preventing them from entering the building or area.

The system is supplied with default settings, allowing it to be used immediately if a standard configuration is adopted.

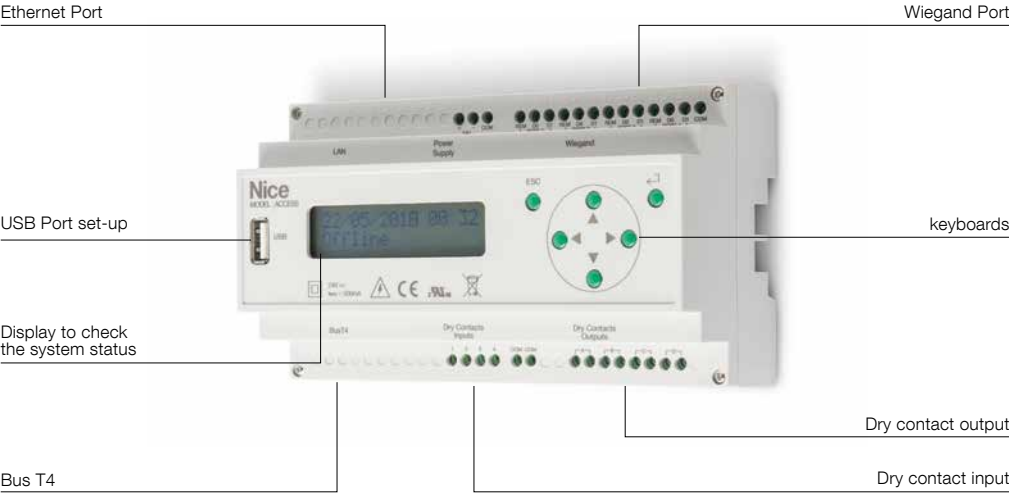
It can also be programmed if necessary.

**Advanced programming**

The system can be programmed using any web browser (Chrome, Explorer, Firefox, etc.). Products with different technologies can be connected, such as RFID, 433/868MHz radio, potential free contact inputs and BusT4. The BusT4 output allows numerous Nice automations to be managed, while the Wiegand ports enable connection of third-party devices. Up to 2000 radio channels can be memorised.

**Advanced management**

Accessing the web area enables areas, buildings and apartments to be defined, user access constraints and authorisations to be established and the access points and devices to be used to be defined. It also provides useful information, such as active and non-active users and those present on-site, number of accesses, accesses allowed/not allowed, details of the users who have had access to the controlled area, access date and time and the access point used.

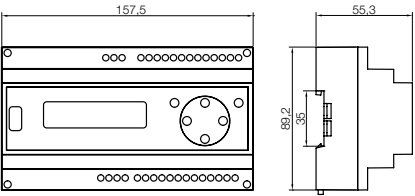


| Code    | Description               | Certificates | Pc. Pack |
|---------|---------------------------|--------------|----------|
| ACNPS01 | Din access control module | CE           | 1        |

TECHNICAL SPECIFICATIONS

| Code                                      | ACNPS01                  |
|---|--------------------------|
| <b>ELECTRICAL DATA</b>                    |                          |
| POWER SUPPLY (Vdc)                        | 24                       |
| ABSORPTION (A)                            | 200mA MAX                |
| <b>RADIO RECEIVER</b>                     |                          |
| FREQUENCY (MHz)                           | 433.92                   |
| ENCODING                                  | 52 bit ROLLING CODE FLOR |
| LOCAL RADIO RANGE (RF)                    | 3m MAX                   |
| MAX CABLE LENGTH (INPUT, OUTPUT, WIEGAND) | 300m MAX                 |
| USERS                                     | 5000 MAX                 |
| LOGS                                      | 100.000 MAX              |
| <b>OUTPUT</b>                             |                          |
| OUTPUT                                    | 250Vac 10A MAX           |
| INPUT                                     | DRY CONTACT              |
| ETHERNET PORT                             | 10/100Mbps               |
| <b>SPECIFICATIONS</b>                     |                          |
| PROTECTION LEVEL (IP)                     | 20                       |
| WORKING TEMP. (°C MIN/MAX)                | 0 °C ÷ +40°C             |
| DIMENSIONS (mm)                           | 157,5 x 89,2 x 55,3      |
| WEIGHT (kg)                               | 400                      |

DIMENSIONS



Nice

# Easy management on a web platform

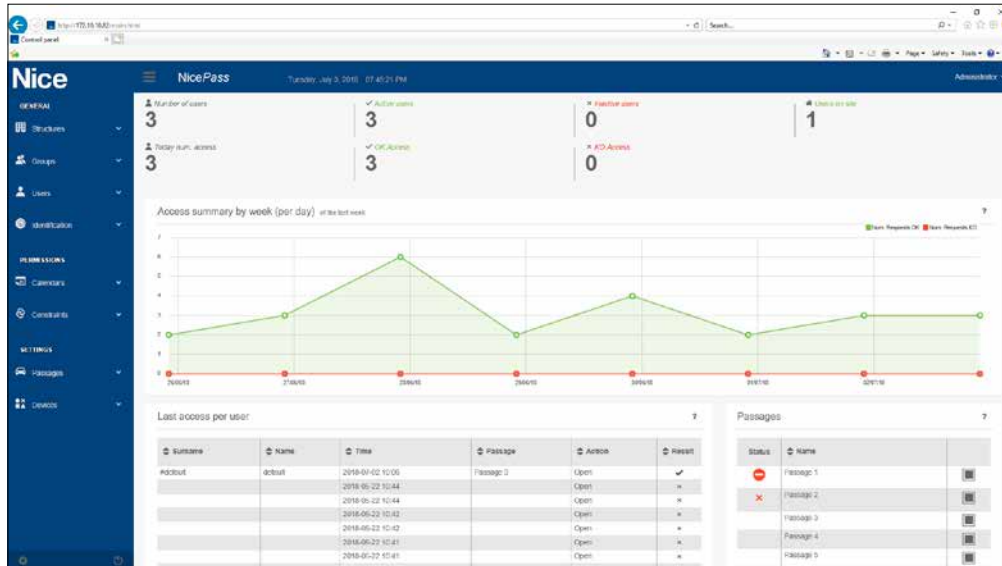
## Complete intuitive user interface

Nice Pass integrates a web platform the administrator can access easily from a PC or other mobile device, both locally and remotely. The platform displays detailed information on accesses, users and associated automations. The administrator can also modify system settings at any moment.



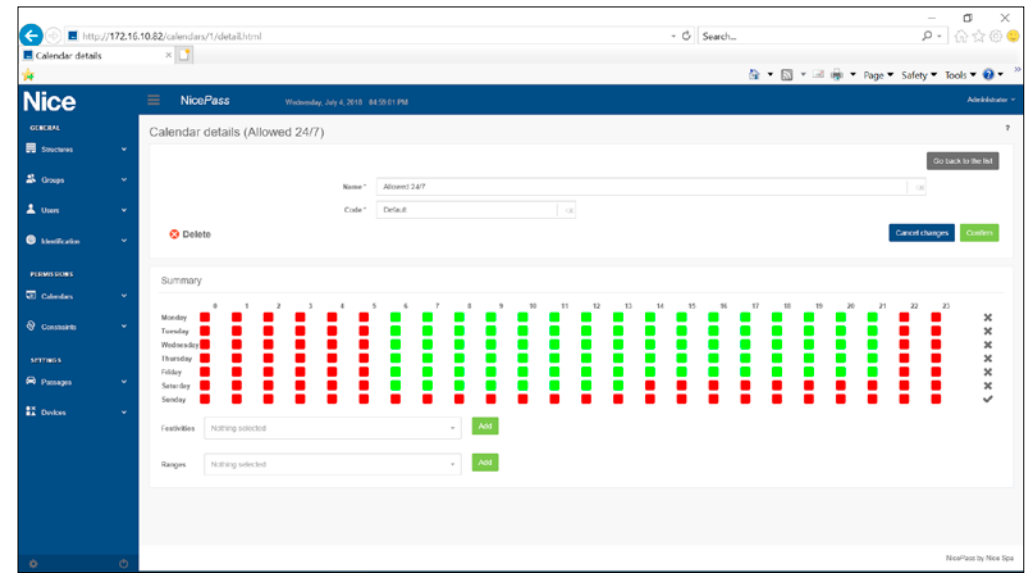
"1. The main dashboard displayed on the home page provides the administrator with statistics on the number of users and number of accesses taking place in a given period of time.

The system also provides information on users and respective access times."

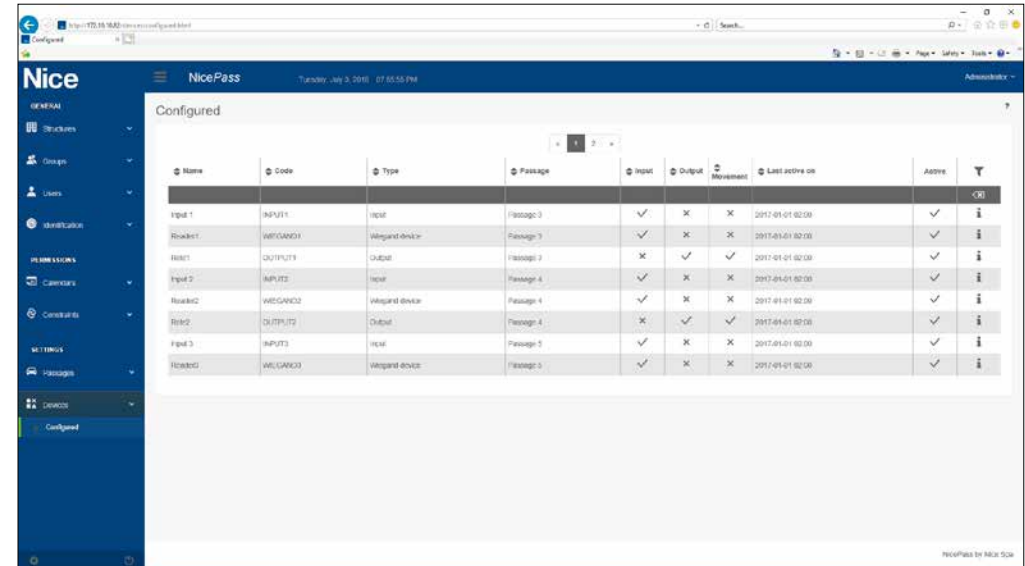


"2. Calendar management allows access to be restricted at individual user or user group level according to a predefined calendar.

For example, the administrator can prevent the access of a group of users during weekends and holidays, or create ad hoc calendars. "



3. The administrator can configure the system architecture completely, simply selecting inputs and outputs, combining devices and creating areas.

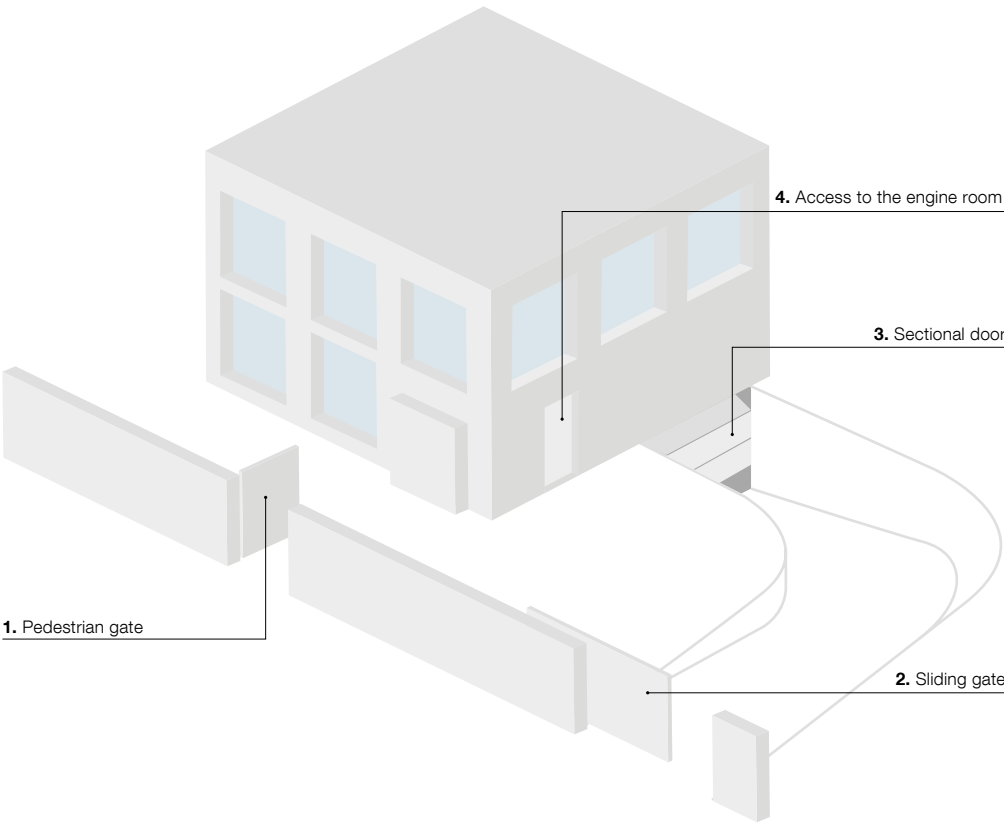


Nice

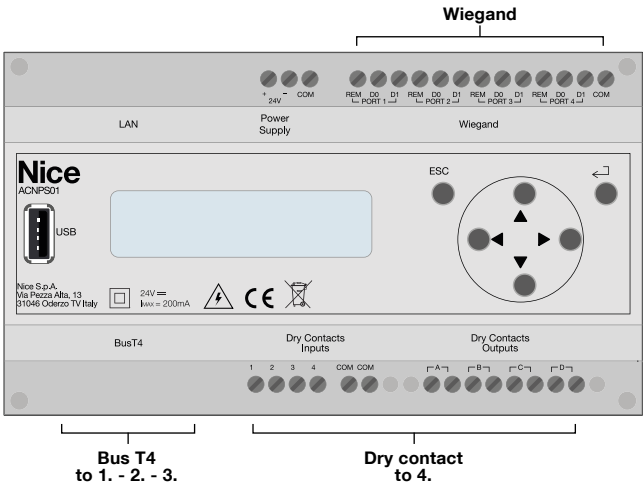
NicePass, residential context

Access and remote control management in blocks of flats, a typical situation where a number of automations are present and a considerable number of people have access to communal areas and private areas according to their profile.

Efficient management  
NicePass enables the administrator of a block of flats or concierge to manage accesses easily and directly, granting or revoking access for one or more users and the associated control devices, or grouping them according to their profile, as residents, maintenance staff and guests. Special restrictions can be created for each of these different groups



Example of application in a residential context



| USERS MANAGEMENT TABLE |                        |                         |                 |                   |                   |
|------------------------|------------------------|-------------------------|-----------------|-------------------|-------------------|
| GROUP                  | USERS                  | 1. PEDESTRIAN GATE      | 2. SLIDING GATE | 3. SECTIONAL DOOR | 4. ENGINE ROOM    |
| TECHNICIANS            | Gardener / Housekeeper | working day 09am - 01pm |                 | -                 |                   |
|                        | Plumber                | 07 a.m. - 11 p.m.       | -               |                   | 07 a.m. - 11 p.m. |
|                        | Electrician            | 07 a.m. - 11 p.m.       | -               |                   | 07 a.m. - 11 p.m. |
| APARTMENTS             | Flat 1                 | 24/7                    |                 |                   |                   |
|                        | Flat 2                 | 24/7                    |                 |                   |                   |
|                        | Flat 3                 | 24/7                    |                 |                   |                   |
|                        | Flat 4                 | 24/7                    |                 |                   |                   |



# Nice for all automation needs

## For swing gates



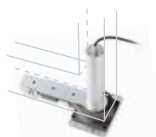
### Toona

Leaves up to 3\* m, 5 m and 7 m.  
Also available in Hi-speed version.



### Wingo

Leaves up to 2\* m and 3.5\* m.  
Also available in Hi-speed version.



### Oltre 1824

Leaves up to 100 kg and 1.8 m.  
Installable inside the profile of the leaf or in very slim post.

## For swing gates, versatile installation with articulated arm



### Hyke

Leaves up to 3.5\* m.  
Also available in Hi-speed version.



### Walky\*

Leaves up to 1.8 m.



### Hopp\*

Leaves up to 2.4 m.

## For swing gates, discreet underground installation



### S-Fab\*

Leaves up to 2.3 m, ultra compact.



### M-Fab

Leaves up to 3 m.  
Also available in Hi-speed version.



### L-Fab

Leaves up to 4 m.  
Also available in Hi-speed version.



### Big-Fab

Leaves up to 5 m.

## For sliding gates, sturdy and powerful installation



### Robus

Up to 400\* kg, 600\* kg and 1000 kg.  
Also available in Hi-speed version.



### Run

Up to 1500 kg, 1800 kg and 2500 kg.  
Also available in Hi-speed version.



### Naked Sliding 400

Up to 400 kg and 6 m.  
Installable inside a compact post.



### Slight\*

up to 400 kg and 6 m.

## For sectional and up-and-over doors



### Spy\*

For sectional doors up to 12.5 m<sup>2</sup> and up-and-over doors up to 14 m<sup>2</sup>.  
Also available in Hi-speed version.



### Spinbus\*

For sectional doors up to 17.5 m<sup>2</sup> and up-and-over doors up to 14.7 m<sup>2</sup>.

## For up-and-over and articulated doors



### Ten\*

For projecting and non projecting up-and-over doors up to 9 m<sup>2</sup>.

## For sectional doors



### Soon

Up to 20 m<sup>2</sup>.



### Sumo

Also for two-wings sliding doors up to 35 m<sup>2</sup>.

## For balanced rolling doors



### Giro

Up to 170 kg and 340 kg.

\* Also available in complete kit solutions

## Remote controls



### Era Inti

Fashionable, 1 and 2 channels available in 6 different colors.



### Era One

Easy and handy, 1, 2, 4, 9 channels, ideal for the management of multi-use systems.



### Era Keypad

Digital selectors for recessed, surface-mounted and wireless installation.

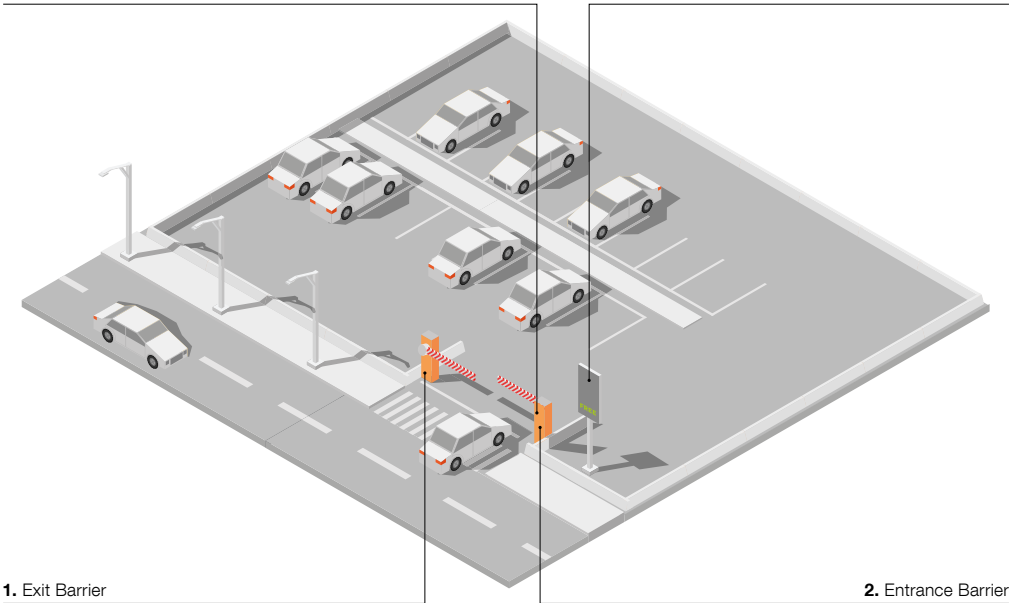
# NicePass, parking context

Management of the automations  
delimiting a parking area and devices  
giving access to a private  
or corporate car park.

NicePass enables the administrator user to restrict  
access to a car park to enabled users only, according to  
the access criteria defined at user or group level.  
The date and time of each entrance or exit is recorded.

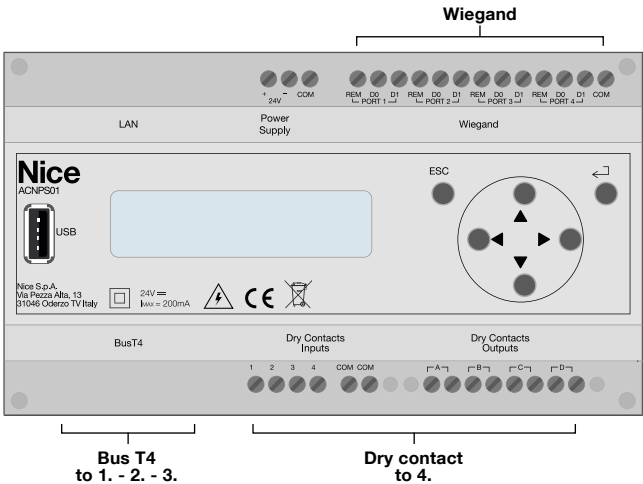
4. Tag Reader for Input / output

3. Digital Display



1. Exit Barrier

2. Entrance Barrier



| USERS MANAGEMENT TABLE |                 |                   |
|------------------------|-----------------|-------------------|
| GROUPS                 | USERS           | PARKING ACCESS    |
| EMPLOYEES              | Morning Shift   | 05 a.m. - 03 p.m. |
|                        | Afternoon Shift | 01 a.m. - 11 p.m. |
|                        | Night Shift     | 09 p.m. - 07 a.m. |
| SECURITY STAFF         | Sorveglianza    | 24/7              |

Nice

# Nice for all automation needs

## Barrier gates



**S-Bar**  
for bars up to 4 m.



**M-Bar**  
for bars from 3 to 7 m.



**L-Bar**  
for bars from 7 to 9 m.

## Accessories to complete your automation



**XBA8**  
Integrable traffic light



**XBA13**  
Rubber impact protection strip.  
Length 1 m.



**XBA4/6/18**  
Indicator lights for click fixture on  
upper or lower side of bar.  
Length 4, 6, 8 m.



**XBA11**  
Joint for bars XBA15  
(from 1950 mm  
to 2400 mm).



**WA13**  
Aluminium rack up to 2 m. .



**WA11**  
Adjustable stand  
for bars.

## Remote controls



**Era One**  
Easy and handy, 1, 2, 4,  
9 channels, ideal for the  
management  
of multi-use systems.



**Era Inti**  
Fashionable, 1 and 2 channels  
available in 6 different colors.

## Accessories to complete your automation



**Era Transponder Reader**  
Transponder proximity reader  
for cards and badges,  
surface-mounted installation.



**Era photocells Medium**  
Synchronized photocells,  
fixed or positionable.  
Ideal for the most popular systems.



**Era photocells Large**  
Synchronized photocells,  
fixed or positionable.  
Ideal for concealed installations.



**Era Post**  
Outdoor aluminium posts  
for photocells, selectors  
and proximity readers, with height  
500 mm and 1000 mm.

# Technology as simple as a gesture



## Nice, easy solutions for Home and Building.

Systems for the automation and control of gates, garage doors, blinds, shutters and alarm systems, with integrated management using smart and intuitive interfaces: practical, functional and elegant solutions to help you enjoy your living spaces to the full.

**Nice**

Nice SpA  
Oderzo TV Italy

[www.niceforyou.com](http://www.niceforyou.com)



**NiceLoveEarth**

Nice cares for the environment.  
Using natural paper it avoids excessive  
use of raw materials and forest exploitation.  
Waste is reduced, energy is saved and  
climate quality is improved.

Our products and technologies are protected  
with patents and design/ trademark registrations.  
Any violation of our rights will be  
legally prosecuted.